

Monroe Promenade

2925 Monroe Way
Monroe, North Carolina 28110



Leasing Contacts

Ron Chanin:

O: (678) 501-5340

C: (404) 312-0412

Email: info@riverwoodproperties.com

Monroe Promenade is a new development located on an outparcel to a 100,000 sf medical office complex anchored by Presbyterian Hospital and directly across Highway 74 from Poplin Place, a power center anchored by Target, TJ Maxx, Ross, and PetSmart. Monroe Promenade is situated in the City of Monroe in Union County which has experienced a 36.9% growth rate since 2000. It is the 16th fastest growing county in the country with the lowest unemployment rate in the Charlotte region.

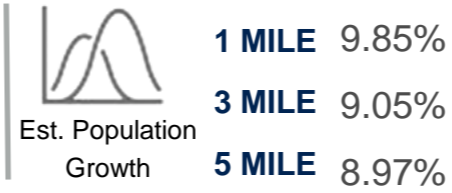
Intersection: US Highway 74 & Windermere Drive

Daily Traffic Counts: 37,000 Vehicles Per Day

Site Access: Property is accessible via US Highway 74 and Monroe Way.

AREA DEMOGRAPHICS

Monroe Promenade



110 Moe's Southwest Grill 2,503

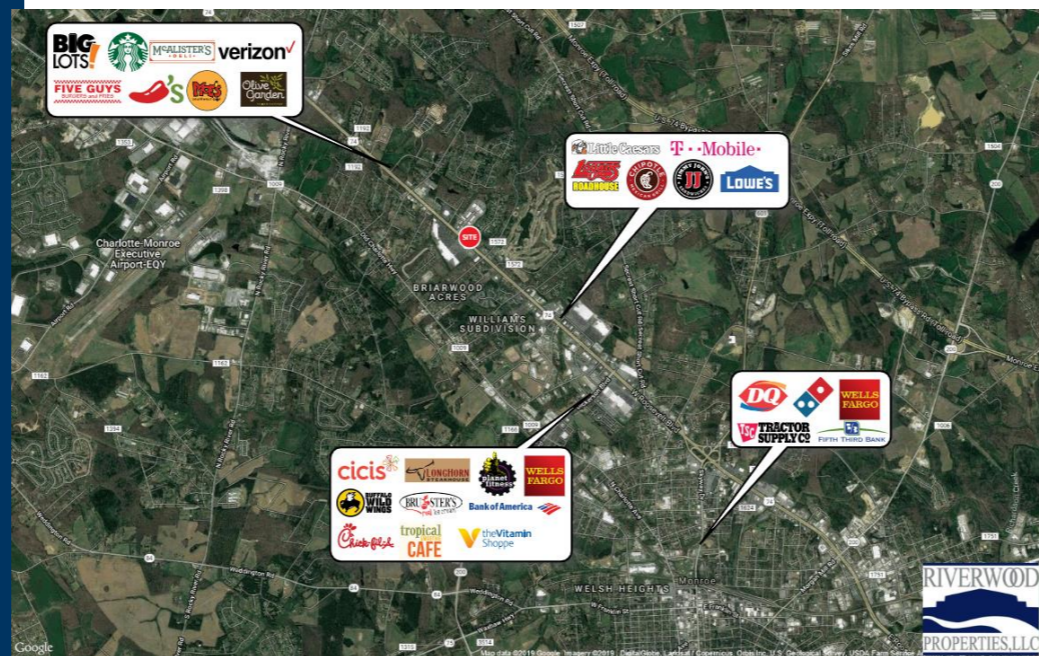
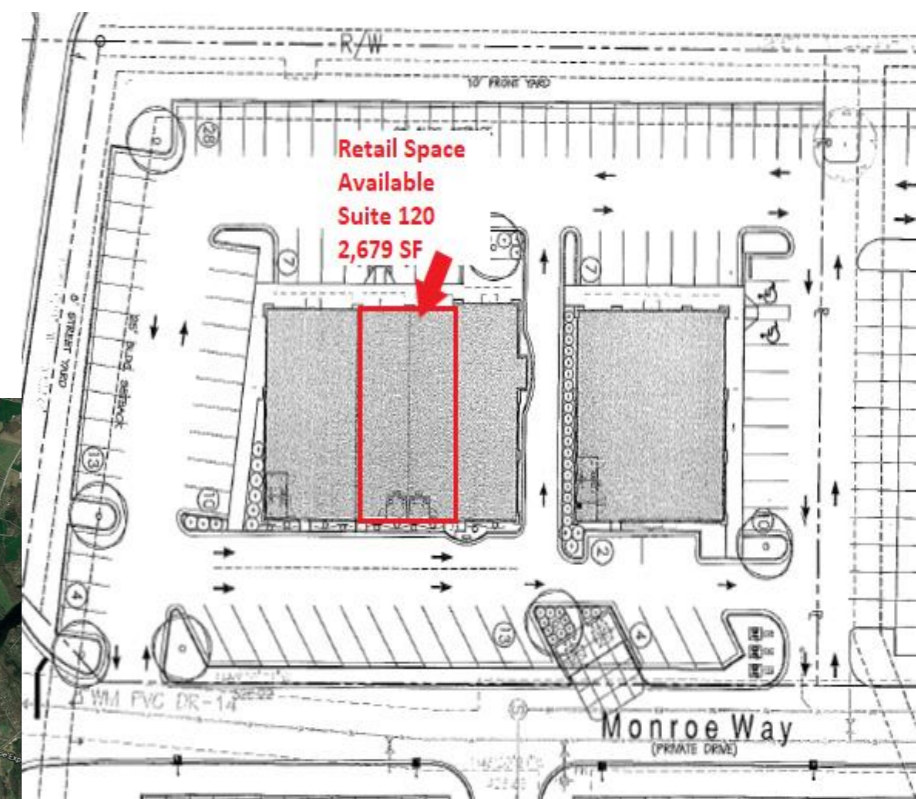
120 *Retail Space Available* 2,679

140 Starbucks 1,812

Free Standing AT&T 4,000

GLA: 10,994 SF

Availability: 2,679 SF



MONROE PROMENADE Trade Area Overview

